



Boating Club News

News and Information for the members of the Tollycraft Boating Club

May 2003



Message From Your Commodore Dan Eastlick

This is the most important newsletter issue of the year, it includes your registration for the 2003, 16th Annual Tollycraft Boating Club Rendezvous. Go to the back page (after reading my article) fill out the form, send a check and drop it in the mail. An early return of the registration form guarantees you a slip at the island paradise of Roche Harbor for 4 great days, June 26th -29th. Great fun and fellowship with other Tollycraft owners is the plan.

In this newsletter, you'll read what the bridge has been planning throughout the year for a Rendezvous that will hopefully be remembered for a very long time. The overall theme of the Rendezvous is a Polynesian/Tropical theme. A more relaxed casual event located in that beautiful island paradise.

Vice Commodore Lee Worthy and his wife Sue have been coordinating the day-to-day events with Roche Harbor staff and have also come up with some pretty clever and different activities. Find out in this newsletter how your artistic talents and a plastic chair can reward you with some special prizes. Enjoy Happy Hour every evening at the party dock.

I am really looking forward to this Rendezvous and to meet up with old friends, make new ones and have just a great time. As some of you might know, our family has a strange interest with the old television series, Gilligan's Island. Jake and I have arguments around the dinner table as to who is cuter, Mary Anne or Ginger. Jacqueline loves coconut cream pie and Krissy packs more clothes than Mrs. Howell. Even the lettering on our boat the E*Slick, is the Gilligan Island font. Well with the castaway's in mind, Friday night's BBQ has a "Shipwreck" theme. As I said earlier, this will be a different from our past Rendezvous. Keeping to the Polynesian/Tropical theme, Saturday's "New Wave Luau" will be less formal than our past sit down dinners, and the tropical menu looks like a great combination of food. Read on in the newsletter about the delicious food and

fun activities planned for Friday and Saturday Night.

Immediate Past Commodore Don Ballew, the club historian for 2003, has been gathering pictures and information from past Tollycraft Boating Club events and is putting it together for a pictorial and written document for all to see. Remember to get double shots of pictures from our Island Paradise and send them to me to be included in the archives of the club.

Rear Commodore Rheta Pearson is coordinating the docking of the Tolly Vessels with the Roche Harbor staff. If that was not enough she has also been working on putting together the Tollyclub's directory/roster. At our last Bridge meeting we saw a draft of the directory and it looks great. It is filled with pictures, Tollyclub and general boating information. If you have friends that are interested in joining the Tollyclub and attending the Rendezvous, tell them that they really have to be early in getting in their registration to be included in the directory.

The Trustee, Kaye Ballew, Thom Permentor and Dione Murray will be working the crowd selling raffle tickets for glittering prizes and cash rewards. They will also be working on the other events during the 4 days of fun. Secretary Ken Pearson will have clothing for sale on the Jubilee and has been busy with newsletters and working on the schedule of events. Treasurer Doug Filer has been collecting dues, inputting data that is easily accessible and will be accepting reservations.

Remember get your paid registration in by June 6th. It's getting to be the time to start thinking about getting your boat ready for the long cruise (for some of us) up to Roche Harbor. We're all excited to see you in June.



A Message From Your Vice Commodore Lee Worthy

The events are planned the menus set; now it is your turn to sign up for our 16th Annual Rendezvous. Sue and I have been working closely with the staff at Roche Harbor the last few months making plans for our special weekend. We are trying some new things this year, changing the tradition. We hope it will be to your satisfaction. Each evening we will have a Happy Hour at the party dock. BYOB, the club will supply the munchies and some of you will perform for us (we hope). Kaye and Don Ballew will be doing coffee and donuts each morning; Saturday morning we will have Mimosas before the Annual meeting. Thanks Don and Kaye for stepping up and taking over this job.

Thursday night we will have our appetizer get together on the party dock and grassy area up above it where there are some picnic tables. Don't forget to bring your favorite dish; (her too) drink of choice and cocktail table if you choose. Be sure to read the article on the "alcohol reminder" in this newsletter, we need to comply with the law.

The theme for Friday nights BBQ sponsored by your club this year is "Shipwrecked". Join us for out of this world BBQ chicken and ribs cooked by Dave Anderson with all the fixin's made by Roche. The dinner will be held up in front of the pool area at the Resort. We invite you to bring your dinghy over so you don't have to walk so far. Wear your favorite Tolly shirt for that club spirit. Don't forget to bring your own chair. There will be a contest for the best "decorated chair" read Sue's article "your participation is requested" in this newsletter for important information. After the BBQ stick around the campfire for s'mores.

Saturday night is the "NEW WAVE LUAU"; just follow the tiki torches from both docks through the Polynesian Rose Garden entrance. Be sure to wear your favorite Luau shirt. Upon arrival there will be a no-host bar including a Tiki Punch Bar with your favorite frozen drink and a little mood music. Mingle with friends while you sample PuPu appetizers. Then enjoy succulent Kalua pig, flame grille teriyaki chicken skewers, gathered greens with roasted basil-macadamia nut vinaigrette with compliments. It is very important again that you bring your own decorated chair, as there will be few places to sit. It should be a fun night. ** We are trying something new this year, no tickets! When you check in with registration upon arrival, each person that is registered (including kids-under 12 free) will be given a florescent wristband that must be worn all weekend. If you are not wearing the wristband you will not be allowed to enter the Tolly events, taking it off voids its use as it may not be passed to someone else. ** The only tickets you will need will be your winning Raffle tickets sold by Thom Permenter and Dione Murray and their band of cutthroats, thanks Thom and Dione. If you have any questions about food events for the weekend please call me or Sue. E-mail: worthywl@aol.com, Phone: (425) 373-1823. Respectively, Vice Commodore Lee Worthy



IMMEDIATE PAST COMMODORE'S CORNER

As your designated "Historian", I am developing an annual hard leaf folder containing suitable written data and pictures of our club's activities. You are encouraged to send your own material such as snap shots or a special article for inclusion. Either send them to me or bring them to our mini or June rendezvous'. Picture captions are desired.

Kaye and I will be leaving your Tollycraft Boating Club's Board this June, having served our allotted time. We have enjoyed being on the board and wish to thank all of you.

Immediate Past Commodore Don Ballew and Trustee Kaye Ballew
Phone: 425-746-2301; E-mail: kdballew@msn.com.



Message From Your Rear Commodore Rheta L. Pearson

Hello, and welcome to our last leg of the rendezvous planning. We are all looking forward to Roche Harbor and are looking forward to seeing all of you at the rendezvous. As the Rear Commodore, it is my duty to be responsible for the moorage at Roche Harbor. Kevin Carlson, the Harbormaster of Roche, and I will be working together to accommodate your docking needs. Kevin's staff will be there to assist you and our "Tolly" crew will greet you when you arrive at Roche Harbor. The channel that Roche will be monitoring is Channel 78A (low watt). Call when entering the harbor. Remember NO WAKE when you are inside the harbor. Roche is looking forward to helping you at the docks and will have an assigned slip number for you once your Rendezvous Registration Form is received. Pay for you own moorage once you are settled in.

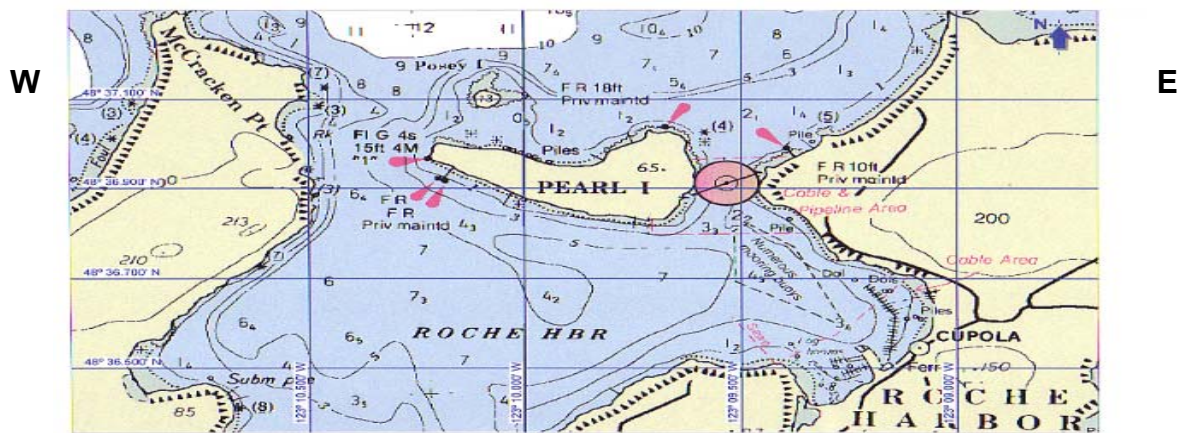
IMPORTANT INFORMATION! I want to repeat what I said in the February newsletter. In 1999, when our fleet arrived for the Roche Harbor rendezvous, many entered through the East Side of Pearl Island. This is a very **DANGEROUS** entryway and 11 vessels from our fleet damaged their props. So, please be aware of this danger. The safest entryway is to the west of the island. Please note the chart below and the "danger" circle directly east of the island. This weekend there are very low tides so please don't add insult to injury. We want you to have a wonderful time at the rendezvous! Check your own tide tables to verify those readings below.

The tides are as follows:

TIDES:	June 26	09:47 a.m. -0.07	June 27	10:18 a.m. -1.2
	June 28	10:50 a.m. -1.70	June 29	11:25 a.m. -2.0

Roche Harbor will be giving our fleet a \$0.20 per gallon fuel discount. If you would like to be next to a certain boating companion or have special needs, please let me know. I will make every effort to accommodate you. Should you have any questions or comments, please contact me at, E-mail: Tollyclub@aol.com or call me on my cell phone at: 206-228-6761.

NORTH



DO NOT USE FOR NAVIGATION PURPOSES
Printed by ChartView™ from Nautical Software (503) 579-1414

Not to scale

Nautical Miles
0.00 0.10 0.20 0.30

SOUTH

**5th Annual MINI-SPRING CRUISE to
Arabella's Landing Marina in Gig Harbor
May 1st (early birds), 2, 3 and 4, 2003**

The 5th Annual Spring Cruise to Arabella's Landing Marina in Gig Harbor was a tremendous success. We had around 25 vessels from our fleet and everyone had a marvelous time. The weather was nice and the food fantastic. A few brand new members arrived, too, and had a marvelous time.

Everyone arrived by Friday and received two oatmeal cookies, a lovely candle and a beautiful spring plant from their host's Ken and Rheta and had a wonderful time visiting with their fellow club members or simply relaxing and enjoying walking the docks. Saturday was spent sightseeing through Gig Harbor and the club's sponsored Pizza Party at the Tide Tavern was a tremendous success, with ten pizza's being devoured.

The cabana was reserved and everyone enjoyed the good food brought by our "Tolly Chefs." Friday night everyone brought their favorite appetizer or hors d'oeuvres and Saturday evening everyone brought a delectable potluck. Everyone had a great time enjoying the community, shopping around town, visiting with friends and enjoy the weekend. Thank you all for coming and for those that remembered, thank you for those oatmeal cookies. Speaking of oatmeal cookies remember our Roche Harbor Rendezvous the weekend of June 26 to June 29, 2003, and speaking of that, remember I like oatmeal cookies. See you at Roche Harbor. Should you have any questions, or if I can be of any assistance, do not hesitate to contact us at anytime. We enjoyed hosting these events and thank everyone for coming. This will be the last time we will host the mini-cruises, Gig Harbor and Bell Harbor. We've had a wonderful time doing them.

Thank you all for your nice comments and yes, those oatmeal cookies.



P/Commodore Ken R. Pearson, Secretary and Rear Commodore Rheta L. Pearson
Phone: 206-575-1395; E-Mail Address: TollyClub@AOL.com

Another Recipe From Rheta's Galley

This is Kaye Ballew's last year with the club as a Trustee. Kaye has served the club for five years and we will miss her immensely. She has contributed so much over these past years with her creativity, humor and friendship. This is her favorite cookie recipe:

Trustee Kaye Ballew's Favorite Cookies

Snickerdoodles



½ cup butter
 ½ cup shortening
 1 ½ cups sugar
 2 eggs
 2 ¾ cups sifted flour
 2 teas. cream of tartar
 1 teas. Soda
 ¼ teas. Salt



Mix together butter, shortening, sugar and eggs in large mixing bowl. Beat until light and fluffy. Add flour, cream of tartar, soda and salt. Stir until combined. Roll dough into balls the size of walnuts and roll in mixture of 2 Tab. sugar and 2 teas. cinnamon. Place 2 inches apart on un-greased baking sheet. Bake in 400-degree oven for 8-10 minutes until lightly browned but still soft. Makes about 5 dozen cookies.

REMINDER: PLEASE READ

This is a reminder to all those that attend. Roche Harbor Marina and Resort has asked us to remind you that there is **NO ALCOHOL ON LAND POLICY**. Open containers of alcohol are not permitted on land. Open containers are only permitted on the docks and in the closed areas where the club is directly sponsoring an event. If you are bringing open alcohol refreshments to the Happy Hour, the Thursday night hors d'oeuvre get together or Friday nights BBQ do not walk up onto the land areas. Thursday night if you are on the long dock, feel free to walk across the fuel dock to the party dock where we will be having our function. Friday night either bring it sealed and pour it there or bring it in your dinghy to the dinghy dock area. Remember-if it floats or roped off all is well. Thanks for your participation and cooperation.

Resources International, Incorporated
Your Tollycraft Parts Company

Resources International, Incorporated in Port Orchard, WA is proud to be a sponsor of the Tollycraft Boating Club's 16th Annual Rendezvous at beautiful Roche Harbor, Washington in the San Juan Island June 26 – 29, 2003. With over 31 years purchasing experience, club members Gordon and Patsy Graham are available to answer any of your questions or to assist you in any way possible. They know that you will have a wonderful time at this years rendezvous.

Over the winter months when the shops are not as busy, Tollycraft Owners can take advantage of the many original replacement parts and services available through **Resources International**. The Tollycraft Boat Parts Division has many of these parts available on their Web Site.

Gordon's knowledge and experience of the Tollycraft parts and material as well as his understanding of the construction of Tollycraft Yachts will assist any owner in their quest for information. His 21 years of experience as purchasing director for the Tollycraft Corporation is very valuable to our membership. He will be delighted to answer any of your questions.

Gordon and Pasty had a wonderful time at last year's rendezvous. They proved games and prizes for the children attending which was a highlight for them. They will once again plan to sponsor any children's prizes for this year's rendezvous at Roche Harbor.

Resources International would like to offer to our members only their Winter Special of 25% off on aluminum steps. The retail price is usually \$57.80 each, so this is quite a bargain. This offer is good until July 1, 2003. Contact them for further information and other specials and discounts.

Please contact Gordon or Pasty at anytime with your questions or parts needs.

***Resources International, Incorporated of Washington**

P.O. Box 1306, Port Orchard, WA 98366

Phone: 360-871-8650 Fax: 360-871-8652

Visit their Web Site at: **www.tolly-classified.com** or

E-mail them at: **boatpartsman@earthlink.net**.

*(R. I., Inc. is the only authorized Tollycraft original replacement parts company in the U.S.A.)

Advertisement information: Your newsletter is printed three times a year. The schedule is February, May and November. If you want to submit an ad, vessel for sale/or wanted, have parts to sell, etc., contact me below. There is no cost to Tolly Boating Club members. Boating items only will be accepted. Also, the Annual Roster is looking for advertisers. If you are interested in advertising in our roster, let me know. P/C Ken Pearson, Editor/Publisher or send an e-mail to: TollyClub@AOL.com or call 206-575-1395.

Your participation is requested

As you are learning in this newsletter we are doing the event dinners a little different this year. Instead of a casual night and a formal sit down dinner, we are having two equally special nights and we need your help. Holding the Rendezvous at a private resort such as Roche Harbor is a much more costly venture for our club. Therefore we looked at ways to have a wonderful weekend and keep some of our costs down. As boaters we are use to using our own chairs to get together on the dock, up at a park, or on the beach. Would you be willing to supply your own chair for these two nights if you had a chance to win "three nights stay at Roche Harbor Marina", Twice? What a value!

This is the idea we came up with; you decorate your own chair to fit the "Shipwrecked" theme for Friday and the "LUAU" for Saturday night and Roche Harbor will award the owner of the best decorated chair a three nights stay each night! A brand new winner will be chosen each night. You can use your three nights anytime other than holiday weekends for one year. Consecutively or individually. Start planning now what you will need to make that great looking pirates chair or Polynesian chair and work on it during the Rendezvous. Should you choose not to decorate your chair you will still need to bring one, as there will be no other chairs provided at the two dinners.**It is absolutely necessary that everyone have either their name or boat name on each chair.** Don't forget Friday night you can come to the Shipwrecked BBQ by dinghy. If you need assistance getting your chairs up to the pool area Friday or the Hotel area Saturday nights please contact me through the registration desk or on our boat the "Sue Bee" by the party dock. We want everyone to attend these events and have fun.
Sue Worthy (Mrs. Vice-Commodore)

VOLUNTEERS NEEDED

Roche Harbor has a large staff to help us do many jobs this year but we still have a need for volunteers for several jobs. Krissy Eastlick (Mrs. Commodore) will be looking for those lovely ladies to assist her with registration starting on Wednesday this year. Sign up at the registration desk when you arrive or contact her at 253-857-3469. Trustee Kaye Ballew, this year in charge of Coffee and Donuts will need morning coffee hosts; they were a hit last year. Sign up at registration or call her at 425-746-2301. We are hoping that many more kids will come this year so we are looking for a couple of Mom's & Dad's to help with kids activities Friday morning from 10-12 pm. Patsy and Gordon Graham from Resources International have again this year, donated some prizes for this get together. Contact Sue Worthy (Mrs. Vice Commodore) at 425-373-1823. Without some volunteer parents we may not be able to have any kids activities, please call today! We can't make this Rendezvous happen without your help. Thanks!

Rendezvous Attire

This year we are suggesting that everyone wear their favorite Tolly shirt to the Friday night Shipwrecked BBQ. If you don't happen to have one check with Ken on the "Jubilee" during the Rendezvous for a limited supply or wear your new Rendezvous T-shirt. For Saturday nights "LUAU" wear that Hawaiian shirt or outfit you haven't worn in years or purchase one at the clothing boutique at Roche Harbor.

TRUSTEE POSITIONS OPEN

Our club would cease to be if there wasn't a board to run it. Over the last couple of years as the existing board has moved up in position no one has stepped in to fill up the trustee positions. In June when the change of watch occurs we will have no trustees at all. Lee Worthy will be Commodore; Rheta L. Pearson, Vice Commodore; Thom Permenter, Rear Commodore; Dan Eastlick Past Commodore/ Historian; P/C Ken R. Pearson, Secretary and P/C Doug Filer, Treasurer. P/C Don Ballew and wife Kaye, Trustee will be retiring from the board. Ken and Doug have already held their positions for several years, as no one has been willing to step up. This leaves no trustees at all to move up the board positions. We need help. Without new trustees the amount of work left for a very few people to do can be overwhelming. Being on the board is a fun experience we develop lasting close friendships. We meet once a month October to June for about 2 ½ hours, then work independently on our job each month and report back to the board at the next meeting. We would like to bring at least two new trustees on board for next year. A trustee consists of a team; two people; husband and wife, partner or whomever you want to work side by side with. This way when one can't attend a meeting the other one can take over, or give two ideas instead of one. A Trustee commitment is for a period of about five years to run the chairs. We need some fresh blood to keep this club going. If you are interested in becoming a trustee, or getting a little more information give one of your board members above a call.

WANTED: Planning to sell your Tollycraft Yacht? I have from time to time interested parties contacting me to see what is available for Tollycraft Yachts. I have had parties interested in 26, 30, 34, 40, 48 and 53's. If you are interested in selling your vessel, you may either place an ad in our Club's Newsletter (November, February and May of each year) or contact me. If I have someone on the list at that time, I will refer them to you. Feel free to contact me at anytime. If I can assist you in any other way, please let me know. P/Commodore Ken R. Pearson, Secretary. Phone: 206-575-1395. E-mail: Tollyclub@aol.com.

For Sale: **Windows**

A complete set of windows for a 1978 30' Sedan. Good condition, no cracks or leaks. There are 9 windows \$50 ea. Or \$400 for all. Contact Steve Sigler: 1-360-944-7614 or siglersg@hotmail.com.

Lease Slip: **Moorage Slip In Seattle**

Slip for Sub-Lease at Beautiful Elliot Bay Marina, on G (Main) Dock, near the fuel dock and grocery store. Beautiful View of Seattle and Mountains, perfect location. Slip available from May to September. Slip Length is 52 feet. Cable TV, 30 and 50 amp power. Contact David Ellard "The Goodyears" at: 206-715-4275.

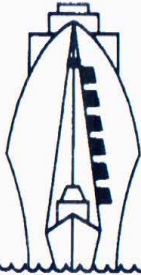
For Sale: 1970, 40' Tri-Cabin. Twin 504 Cummins Diesels, Generator, Radar, GPS, VHF and much more. \$89,500. Call for more info: Colin Thomson, 360-457-0627.

For Sale: Princess Electrical Stove, 3 burner. Good condition. Is yours broken, need parts? \$199 or best offer, Call: P/C Ken Pearson, 206-575-1395 or e-mail: Tollyclub@aol.com

For Sale: 1979, 40' Tri Cabin., "Gale Force". Beautiful and well maintained. A rare vessel with twin 3208 Diesel under 900 hours. Cruising Speed 10-12 knots. Total rewiring, 2500 watt inverter/charger with lots of batteries. Vacuum Flush Heads, dripless shafts, extended swim platform w/dinghy platform, GPS, VHF Radios, Depth sounders, 36 Mile Furuno Radar and many upgrades. A Must Too SEE! \$89,500 Call: George Gale 1-360-220-1046 or Michael Gale at 1-360-739-4976.

For Sale: 1979, 37' Sedan. Twin 330 hp, Lower Galley. Gen Set, \$74,900. Radar, GPS Plotter, Autopilot, and much more. Call for details: Roger Orth, 425-747-2002.

For Sale: 1977, 26'. Very Nice. 1996 454 Merc. 310 hp, w/new shaft & V-drive. Rudder enlarged, dry seal and bottom paint in 12/01. New Anchor, chain and rode. New Refrig. Upholstery, toilet. VHF (2), GPS (2) Livingston dinghy w/4hp Evinrude on Weaver Davits. A must to see. Fully equipped and much more. \$28,500. Call: Joe Chambers, 360-757-3454



LUNDE MARINE ELECTRONICS, INC.

5415 24th Avenue N.W. Seattle, Washington 98107
Tel.: (206) 789-3011 FAX: (206) 782-3188
Watts: (800) 275-3820 MCI: 6865421

LUNDE MARINE ELECTRONICS, INC. is proud to be a participant of this year's rendezvous of the Tollycraft Boating Club's 16th Annual Rendezvous at beautiful Roche Harbor in the San Juan Island. If I can be of any assistant to you regarding your electronics, feel free to contact me at anytime. Last year we ran an article about differentials. I thought that I would repeat this article again.

What's the Differential?

This spring I am frequently asked: what is the WAAS differential system and how does it compare with the land based differential system the Coast Guard runs? Both claim to correct your GPS position to 1-3 meters. The Coast Guard system is complete and was designed for the maritime community. Canada is fully participating, with stations covering all waters from Washington to Alaska.

WAAS stands for Wide Angle Augmentation System and is being developed by Raytheon for the FAA to provide in-flight navigation corrections for aircraft including satellite failure alerts. Despite the program still being in the test phase, there have been a lot of new products with the WAAS capability. One reason is that it is very inexpensive to add WAAS to GPS receivers. The information is broadcast like a GPS signal by two geostationary satellites – one over the East Coast and one over the West. The plan is to have monitoring stations at the airports and your GPS will use the correction factor sent in by the closest station. Presently, the only station on the West Coast is Seattle. Thus, the correction becomes less useful the further away from Seattle you go. Canada has no plans to participate in this program.

We at **Lunde Marine Electronics, Inc.** are your full service electronics dealer. We carry all the major brands including everything from Radar to GPS from VHF to SSB and everything in between. Call me with your questions.

Fred Fink, Sales Manager

LUNDE MARINE ELECTRONICS, INC.

5415 – 24th Avenue N.W.
Seattle, WA 98107
206-789-3011

16th ANNUAL
TOLLYCRAFT BOATING CLUB
RENDEZVOUS At Roche Harbor

June 26th through June 29th

2003

This year's rendezvous price for members is \$50.00 per person for adults, (\$60 US for International Non-Members). Children 12 and under will be free. This will include all 4 days of scheduled events. Moorage fees not included.

Note: Because there are a limited number of moorage slips, it is important to register early to ensure moorage. Space is limited and as usual, assignment will be on a first come first serve basis. The deadline for registration is Friday June 6th, 2003.

One Price Includes All Scheduled Events
for the Entire Weekend.

IMPORTANT NOTICE! It is recommended that you register ASAP! Please mail this form with payment immediately. Registration not accepted without payment. Registration Form and further information on next page. Should you have any questions please call Doug Filer at 206-545-4800.

(Visit our Club's New Web Site at: www.Tollyclub.com)

ROCHE HARBOR 2003 RENDEZVOUS

REGISTRATION FORM

Daily activities: games, drawings, gifts, door prizes, food including morning coffee & donuts and much more , plus the enjoyment of beautiful Roche Harbor.

June 26th, Thursday – **Bring to Share Hors d' oeuvres** (Early Bird Arrival)

We will feast on appetizers prepared by our own talented Tollycraft galley chefs. (Bring to share an appetizer, hors d'oeuvres and/or dessert or your favorite dish).

June 27th, Friday – **Enjoy the afternoon at Beautiful Roche Harbor**

Donuts and coffee in the am. Happy hour at 4:30 pm. BBQ at 6 pm. "SHIPWRECKED" Theme at pool area. Bring your own chairs.

June 28th, Saturday – **Spend the Day enjoying the sites and sounds of Roche Harbor**

Review your Schedule of Events for those activities. Donuts and coffee in the am. Duck races, games, fun and excitement. Saturday evening at the Rose Garden entrance, Happy hour at 4:30 pm. "NEW WAVE LUAU" at 6 pm. Bring your most decorative Luau attire and your own chairs.

June 29th, Sunday – **Have a nice cruise to your next destination**

Donuts and coffee in the am. Depart by 1:00 p.m.

(Detailed Schedule of Events will be in your packets)

_____Tear off here and send this information to address below _____

Members Name _____ Arrival Date _____ Approx. Time _____

_____ Boat Name _____ Length _____ Number of people _____

T-Shirt Size Per Paid Person XXL ___ XL ___ L ___ M ___ (no smalls)

All Children 12 years old and under are free. Funds are in US Dollars (USD).

Tolly Club Member's Price: Adults: \$50 per person;

Number of Adults _____ @ \$50 =Total: \$ _____

Number of Children attending _____

International Non-Member's Price: Adults: \$60 (USD) per person;

Number of Adults _____ @ \$60=Total: \$ _____ (USD only)

(Enclose your check and the registration form and send to the club's treasurer. One T-shirt per Adult Registration, no children's T-shirt available. Price includes 4 full days of fun; donuts, coffee, O.J., gifts, food, music, special events and entertainment.)

VOLUNTEERS NEEDED. Please sign up by checking this form if you can assist us. You

will be contacted by a bridge member. Registration _____ Raffle Ticket Sales _____ Coffee/

Donuts _____ Docking _____ Clean up _____ Decorations _____ Games _____

Anything else _____

Send Checks to: Tollycraft Boating Club

c/o Doug Filer, Treasurer

4201 Roosevelt Way NE

Seattle, WA 98105

Phone: (206) 545-4800

Fax: (206) 545-4849

E-mail: DFILER@MSN.COM

Deadline for paid registration is FRIDAY JUNE 6TH, 2003!

Registration Not Accepted Without Payment!

Registration will be confirmed by return Postcard



Boating Club

C/o Doug Filer, Treasurer
4201 Roosevelt Way NE
Seattle, WA 98105
May 2003 Newsletter

Inside this Newsletter

REGISTRATION FORM
INSIDE, Register ASAP!

Commodore's Message

Vice-Commodore's Article,
About food, what to do.

Important information about
entering Roche Harbor,
Rear Commodore's
Report—READ!



Boating Club

**New Membership
Application**

• **Date** _____

• **Name** _____ **Spouse's Name** _____

• **Address** _____

• **City** _____ **State** _____ **Zip** _____

• **Phone#** _____ **E-Mail Address** _____

• **Moorage Location** _____

• **Yacht Club Affiliation** _____

• **Vessel Name** _____ **Model** _____

• **Hull Number (TYL)** _____ **Length** _____ **Year** _____

- \$45 First Year Membership - Includes roster, newsletter, name tags & Tollycraft Bargee.
- \$30 Renewal - Includes roster and newsletter.

• Send Application with payment to:

- Tollycraft Boating Club
- Doug Filer, Treasurer
- 4201 Roosevelt Way NE
- Seattle, WA 98105

DO NOT WRITE IN THIS SPACE

Date Rcvd. _____

Amt. _____

Dues Pd. To: _____

Rev. By: _____

Comments _____

**2002/2003 Tollycraft
Boating Club Officers**

- Dan Eastlick (253) 857-3469
• Commodore
- Lee Worthy (425) 373-1823
• Vice Commodore
- Rheta L. Pearson (206) 575-1395
• Rear Commodore
- Ken R. Pearson, P/C (206) 575-1395
• Secretary
- Doug Filer, P/C (206) 545-4800
• Treasurer
- Don Ballew (425) 746-2301
• Immediate P/C
- **Trustees:**
- Thom Permenter (425) 478-3994
- Kaye Ballew (425) 746-2301

Newsletter Staff:

- Ken R. Pearson, P/C **Publisher/
Editor**
- Doug Filer, P/C **Printer**
- Sue Worthy **Assembler**