



# Boating Club News

News and Information for the members of the Tollycraft Boating Club

February 2003



## Message From Your Commodore Dan Eastlick

The Tollycraft Boating Club Bridge is diligently working out the details for the next Rendezvous. This will be a great time to start our summer travels in the San Juan Islands or venturing up North to Canada. If you haven't already, mark your calendars for the last weekend in June which is 26 to 29. The Bridge is planning a variety of Tolly Club adult and kid activities on the docks. Look for dinghy races, adult and kids mixers, duck races and a mixture of entertainment and games.

You'll read throughout the Newsletter more about all the other activities the Tollycraft Boating Club Bridge is planning. I wanted to write this quarter about some of the reasons why we like and chose San Juan Island for our next Rendezvous. Over the years my family has enjoyed the San Juan Islands and has taken advantage of many of the activities I've listed in this article. I've done a little research, checked a few web sites and wanted to tell you about some of the things I found interesting and that you could enjoy during an extended stay in and around San Juan Island.

Roche Harbor is not only beautiful, but offers wonderful activities unique only to the Northwest. On the grounds of Roche Harbor Marina just before sunset watch the nightly tradition of "The Retirement of the Colors" ceremony. There's also swimming in the pool, volleyball and strolling the docks. I've listed just some of the activities that were suggested by the Marina Staff while docked at Roche Harbor:

- You might start by buying the "Historic Walking Tour" for one dollar at Hotel Front Desk.
- Wander through our beautiful Victorian gardens.
- Take a 15-minute walk to the mausoleum - Roche Harbor founder John McMillin's family memorial.
- View historic photos in the Hotel lobby depicting Roche Harbor's "Lime Kiln Years".
- Hike the trails through the old lime quarries or to British Camp.
- View over 75 sculptures by prominent Northwest artists at the Westcott Bay Reserve Sculpture Park, a 19-acre "outdoor museum" overlooking Westcott Bay, across from the airstrip and cottages.
- Find former President Theodore Roosevelt's signature in the guest book in the Hotel lobby.

While there are many activities at and around the marina, you'll also enjoy a limitless in the number of activities while on San Juan Island.

- 1 Take a shuttle or a taxi to Friday Harbor. You'll find boutiques, art galleries, and a variety of restaurants. Walk about the town or find a place to relax and watch the ferry and harbor action.
- 2 Visit the Whale Museum to learn everything you ever wanted to know about whales, specifically Orca whales in their natural habitat here in the San Juan Islands.
- 3 Take a picnic to Lime Kiln Point State Park - Whale Watch Park, the state's first official whale watch park. This is where you're most likely to see whales late April through September. Last year, whales were spotted until Thanksgiving weekend.
- 4 Learn about island history and the famous "Pig War" at American Camp National Historical Park, British Camp National Historic Park, or the San Juan Historical Museum.
- 5 Gather fresh, gourmet oysters, mussels or clams at Westcott Bay Sea Farms, just 5 minutes from Roche Harbor. Their oysters are served at fine restaurants across the U.S.
- 6 Taste award-winning wines in an 1896 schoolhouse at San Juan Vineyards.
- 7 Smell the fragrance of lavender in Pelindaba Farms Gate House/Gift Shop. Tours and harvesting take place July through September. Purchase lavender oils, soaps, sachets, pepper, honey, etc.
- 8 Take a picnic to the top of Mt. Young to enjoy spectacular views of the San Juan Islands and Canadian Gulf Islands.
- 9 San Juan Island is perfect for bicycling. Ride your own or rent one at Island Bicycles in Friday Harbor. Enjoy the island's spectacular views and moderate bicycling terrain.
- 10 Go birding. San Juan Island is a birder's paradise, where you'll see everything from eagles to swans, including herons, hummingbirds, osprey, cormorants, Canadian geese, falcons, hawks, etc.
- 11 Contact Island Dive to go scuba diving and find out why Jacques Cousteau chose the San Juan Islands as his second favorite diving location in the world.

Continue reading the newsletter and you'll find out more about all the activities we have planned for the Rendezvous.



## A Message From Your Vice Commodore Lee Worthy

Greetings from the Vice:

I hope you all found treasures at the boat show in Seattle! I know Sue and I had a great time and it was fun seeing other Tolly owners among the crowd. We saw Kevin at the Roche Harbor booth and he told us that many of you had stopped by and asked what was on the agenda. We are glad you're curious. Kevin and his staff are working closely with us to make this rendezvous a wonderful event for all.

I hope everyone is looking for that perfect Hawaiian shirt or muumuu to go along with the Tiki Torches that will light our way along the famous paths of Roche Harbor! We will be having an open-air affair this year, as the big tent would have busted the budget! I have talked with many Tollyclub members and everyone has been enthusiastic about this year's Polynesian theme and plans.

Some highlights will include the world-famous Duck Races with commentary from the "Madeline R", Best Decorated Chair contest with prizes, and a host of other events. Who is up for the traditional blindfold dinghy race? As you can see we are making plans and on course for a terrific time. Don't forget to mark your calendars for this Tolly Class event!

Lee Worthy, Vice Commodore. E-mail: [worthywl@aol.com](mailto:worthywl@aol.com), Phone: (425) 373-1823



### IMMEDIATE PAST COMMODORE'S CORNER

Our annual June rendezvous extravaganza is rapidly approaching. Food, beverage, and entertainment arrangements are in place or pending. Coordination with the Roche Harbor staff and suppliers is proceeding smoothly. Your Tollycraft Board is putting together yet another memorable, exciting, and fun filled rendezvous of historic proportions that may well prove to be our finest. So please mark your calendars (June 26-29, 2003) to reserve this special time to socialize with old and new friends.

As your designated "Historian", I am developing an annual hard leaf folder containing suitable written data and pictures of our club's activities. You are encouraged to send your own material such as snap shots or a special article for inclusion. Either send them to me or bring them to our mini or June rendezvous'. Picture captions are desired.

Kaye and I will be leaving your Tollycraft Boating Club's Board this June, having served our allotted time. If you would be interested in volunteering for Board membership please contact me at anytime or any Board member. We'll be happy to answer any of your questions.

Immediate Past Commodore Don Ballew and Trustee Kaye Ballew  
Phone: 425-746-2301; E-mail: [kdballew@msn.com](mailto:kdballew@msn.com).



## Message From Your Rear Commodore Rheta L. Pearson

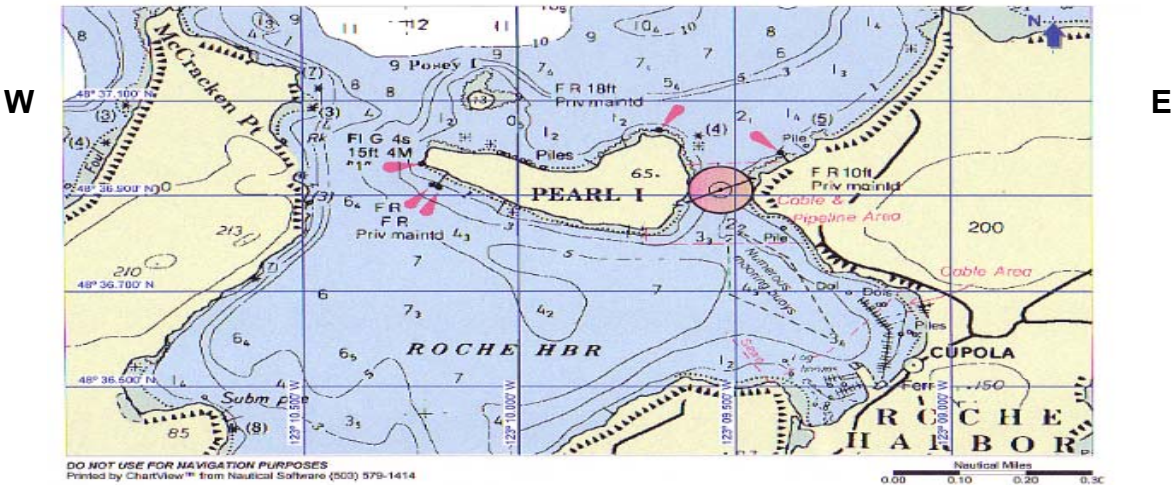
The "Bridge" has been hard at work planning a fun time at beautiful Roche Harbor Resort and Marina. You don't want to miss this event! Since I am in charge of moorage, I will be working closely with the Harbormaster, Kevin Carlton, accommodating your needs. Roche will be there to assist you when you dock and our Tolly crew will greet you. As a reminder, the channel that Roche Harbor will be monitoring is Channel 78A (low watt). Call when entering the harbor. Remember NO WAKE when you are inside the harbor or you'll rock the lovely Tollys at the docks (not a pretty sight). Roche Harbor is looking forward to helping you at the docks and will have an assigned slip number for you. Remember to pay for your own moorage once you are tied to the docks. There will be \$.20 per gallon fuel discounts for our fleet, as well.

### READ BELOW!

**Important information!** In 1999 when our fleet arrived for the Roche Harbor rendezvous, many entered through the East Side of Pearl Island. This is a very DANGEROUS entryway and 11 vessels from our fleet damaged their props. So, don't enter this way! The safest entryway is to the west of the island. Please note the chart below and the "danger" circle directly east of the island. If you would like to be next to a certain boating companion or have special needs, please let me know. I will make every effort to accommodate your needs. Watch for important information and instructions in our May Newsletter. Should you have any questions or comments, please contact me at:

E-mail: [Tollyclub@aol.com](mailto:Tollyclub@aol.com) or call me on my cell at: 206-228-6761.

NORTH



SOUTH



**5<sup>th</sup> Annual MINI-SPRING CRUISE to  
Arabella's Landing Marina in Gig Harbor  
May 1<sup>st</sup> (early birds), 2, 3 and 4, 2003**

Last year our 4th Annual Spring Cruise to Arabella's Landing Marina in Gig Harbor was a tremendous success. We had 25 vessels from our fleet last year in attendance. Due to popular demand, we are planning another cruise to Gig Harbor. Mark your calendar for Friday May 2nd, Saturday May 3rd and Sunday May 4<sup>th</sup>. A few of us will be coming on Thursday, May 1<sup>st</sup>, so come early if you can. I have reserved **ONLY** 20-25 slips so reservations are required. If you are planning on coming, this year you will be required to CALL ARABELLA'S LANDING MARINA at 253-851-1793 and make you're own reservations. A deposit may be required with the marina. Check on their \*cancellation policy if this would be a concern. Last year I had reservations that canceled and I was responsible. So this year, we felt that making your own reservation would be the best thing to do.

Also, contact us below and let us know that you have made your reservation and have confirmed with Arabella's. This will assist us in making up a list of vessels that will be coming and to get a head count. This will be greatly appreciated, too, so that I can get a more accurate count of the oatmeal cookies that I need to get for you (remember, I like oatmeal cookies, too!).

We will have a great time. This would allow us all the opportunity for a shake-down cruise and get out and enjoy the spring weather and have some fun. Saturday at lunch, the club will provide a pizza party at Tides Tavern. Last year, there were over 60 people in attendance.

I have reserved the cabana again. Plan on bringing a hors d'oeuvre for Friday night and a potluck for Saturday night. Enjoy shopping around town, visit with your friends and enjoy the weekend. Should you have any questions, do not hesitate to contact us at anytime. This will be our final mini cruise that we will host and put together. We started this idea of having additional "mini" cruises (Gig Harbor and Bell Harbor) and it has been a great success. Thank you all for your nice comments and yes, those oatmeal cookies.



P/Commodore Ken R. Pearson, Secretary and Rear Commodore Rheta L. Pearson  
Phone: 206-575-1395; E-Mail Address: TollyClub@AOL.com

\*(Cancellation Policy with Arabella's Landing. "In the event that someone cancels due to weather or other plans, we must be notified by noon of the day of his/her arrival. If no cancellation is received and the boater doesn't show, we will charge for the full night's moorage. True emergencies will be taken into consideration.")

## *Another Recipe From Rheta's Galley*

It has been such a pleasure to work with Don these past years. He has added so much to the club with his organizational skills and great sense of humor. I look forward to seeing him at our monthly meetings. This is one of his favorite cookies. Have a cookie recipe to share (for Ken?), let me know. Rear Commodore Rheta L. Pearson; E-mail: Tollyclub@aol.com.

### *Past Commodore Don Ballew's Favorite Cookies*

#### **Peanut Butter Chocolate Chip Bars**



1 ½ cups flour  
2 teas. baking powder  
½ teas. baking soda  
½ cup butter  
½ cup peanut butter  
½ cup sugar  
½ cup brown sugar



1 teas. vanilla  
2 eggs  
1 cup chocolate chips

Combine flour, baking powder and soda. Set aside. Cream butter, peanut butter, both sugars and vanilla until light and fluffy, about 1 ½ minutes. Add eggs one at a time, beating well after each. Add dry ingredients. Stir well. Add chocolate chips and stir again. Spread into 13x9 inch greased pan.  
Bake in 350 degree oven for 20-30 minutes, or until set.

### **Tolly Music**

We have a great idea for "Happy Hour" every evening before the main event. Our Tollycraft Boaters are a very creative, inventive and musical people. We will be having a Happy Hour on the Party Dock each evening, and are calling all musicians to bring their instruments, and provide entertainment. Do you play a keyboard, the guitar, a flute, saxophone, an autoharp, the spoons or any other instrument? Please bring your instrument, and we will have a grand time! And if we are really good, we will have lyrics printed so those of us who sing can participate too. Dancing is anticipated. You don't have to RSVP. All comers will be welcomed. If you would like to be more formal, contact Sue Worthy at 425-373-1823 or Dione Murray at 425-478-3994, and we can set up performance sections. This is a great way to meet your Tolly members on a more intimate level, and disseminate joy to all.

**Resources International, Incorporated**  
**Your Tollycraft Parts Company**

**Resources International, Incorporated** in Port Orchard, WA is proud to be a sponsor of the Tollycraft Boating Club's 16th Annual Rendezvous at beautiful Roche Harbor, Washington in the San Juan Island June 26 – 29, 2003. With over 31 years purchasing experience, club members Gordon and Patsy Graham are available to answer any of your questions or to assist you in any way possible. They know that you will have a wonderful time at this years rendezvous.

Over the winter months when the shops are not as busy, Tollycraft Owners can take advantage of the many original replacement parts and services available through **Resources International**. The Tollycraft Boat Parts Division has many of these parts available on their Web Site.

Gordon's knowledge and experience of the Tollycraft parts and material as well as his understanding of the construction of Tollycraft Yachts will assist any owner in their quest for information. His 21 years of experience as purchasing director for the Tollycraft Corporation is very valuable to our membership. He will be delighted to answer any of your questions.

Gordon and Pasty had a wonderful time at last year's rendezvous. They proved games and prizes for the children attending which was a highlight for them. They will once again plan to sponsor any children's prizes for this year's rendezvous at Roche Harbor.

**Resources International** would like to offer to our members only their Winter Special of 25% off on aluminum steps. The retail price is usually \$57.80 each, so this is quite a bargain. This offer is good until May 1, 2003. Contact them for further information and other specials and discounts.

Please contact Gordon or Pasty at anytime with your questions or parts needs.

**\*Resources International, Incorporated of Washington**

P.O. Box 1306, Port Orchard, WA 98366

Phone: 360-871-8650      Fax: 360-871-8652

Visit their Web Site at: **[www.tolly-classified.com](http://www.tolly-classified.com)** or

E-mail them at: **[boatpartsman@earthlink.net](mailto:boatpartsman@earthlink.net)**.

\*(R. I., Inc. is the only authorized Tollycraft original replacement parts company in the U.S.A.)

**Advertisement information:** Your newsletter is printed three times a year. The schedule is February, May and November. If you want to submit an ad, vessel for sale/or wanted, have parts to sell, etc., contact me below. There is no cost to Tolly Boating Club members. Boating items only will be accepted. Also, the Annual Roster is looking for advertisers. If you are interested in advertising in our roster, let me know. P/C Ken Pearson, Editor/Publisher or send an e-mail to: [TollyClub@AOL.com](mailto:TollyClub@AOL.com) or call 206-575-1395.

## HEY KIDS!

Did you save your DUCK from the Port Orchard Rendezvous? If you did, bring it with you as a good luck charm. If you didn't, that is okay. You will get a new duck this year in Roche Harbor. If you didn't make it to Port Orchard, that's okay too. Let me tell you about the DUCK RACES.

Each kid under the age of 12 will get a DUCK to paint. We will have Races on the dock on Saturday. Each "jockey" will pilot their DUCK down the dock to the finish line to the cheers of the BETTING CROWD. There will be prizes for the winning DUCKS and jockeys. Last year the winning jockey won a cd player!!

Now for the grownups: (How grownup are we when we spend what we spend on our boats?) There will be PARAMUTUAL wagering on the DUCK RACES! Just Like Emerald Downs except your kid will be jockeying a Duck.

Plan on the kids having a great time and bet on your favorite jockey and DUCK!!

Thom Permenter, Trustee  
RACE STEWARD

**WANTED:** Planning to sell your Tollycraft Yacht? I have from time to time interested parties contacting me to see what is available for Tollycraft Yachts. I have had parties interested in 26, 30, 34, 40, 48 and 53's. If you are interested in selling your vessel, you may either place an ad in our Club's Newsletter (November, February and May of each year) or contact me. If I have someone on the list at that time, I will refer them to you. Feel free to contact me at anytime. If I can assist you in any other way, please let me know. P/Commodore Ken R. Pearson. Phone: 206-575-1395. E-mail: Tollyclub@aol.com.

### **For Sale**

43', 1982, Asking \$194,000, rare; 1986 34' Sundeck, \$99,995; 37', 1979, \$75K, lower galley; Contact P/Commodore Ken R. Pearson at Tollyclub@aol.com or 206-575-1395.

(Subject to change without notice)

### **Looking for another Tolly?**

If you are looking for another Tollycraft Yacht, planning on moving up or down, let me know as I sometimes have different individuals to either buy or sell.

P/Commodore Ken R. Pearson. E-mail at: Tollyclub@aol.com; Phone: 205-575-1395.

## TOLLY'S BIRTHDAY PARTY 2003

More than thirty hardy souls braved the chilly and damp January weather to help celebrate the 92<sup>nd</sup> birthday of Mr. "Tolly" Tollefson, founder of Tollycraft Yachts and creator of our reason for being. The celebration was held, as in past years, at the Seattle Yacht Club outstation at Elliot Bay Marina on Saturday, January 25, 2003.

Many of us haven't seen each other since Port Orchard and this provided a chance to catch up on what's new on our boats and in our lives. Meeting new members in these intimate surroundings was especially enjoyable. We relish these gatherings of the "Tolly" family and urge you to attend in the future.

We feasted on appetizers provided by our talented "Tolly" chefs. We enjoyed everything from BBQ baby back ribs, and cheese-stuffed meats to full vegetable plates with accompanying dip, and ended with a lovely cake for dessert.

All who attended were pleased to have Tolly and Mike join us. Tolly treated us by bringing some of his recent drawings. For those who do not know, Tolly spends his spare time drawing plans for cruising yachts. The intricacy of detail in his hand-drawn plans is truly a marvel.

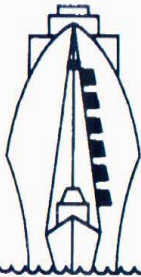
After a wonderful evening of socializing, Tolly cut the cake, we sang the traditional Happy Birthday song and "For He's a Tolly Good Fellow".

We wish Tolly a Happy Birthday and many happy returns.

DON'T MISS TOLLY'S BIRTHDAY PARTY NEXT YEAR!! Thom Permenter, Trustee







## LUNDE MARINE ELECTRONICS, INC.

5415 24th Avenue N.W.      Seattle, Washington 98107  
Tel.: (206) 789-3011      FAX: (206) 782-3188  
Watts: (800) 275-3820      MCI: 6865421

**LUNDE MARINE ELECTRONICS, INC.** is proud to be a participant of this year's rendezvous of the Tollycraft Boating Club's 16th Annual Rendezvous at beautiful Roche Harbor in the San Juan Island. If I can be of any assistant to you regarding your electronics, feel free to contact me at anytime. Last year we ran an article about differentials. I thought that I would repeat this article again.

### What's the Differential?

This spring I am frequently asked: what is the WAAS differential system and how does it compare with the land based differential system the Coast Guard runs? Both claim to correct your GPS position to 1-3 meters. The Coast Guard system is complete and was designed for the maritime community. Canada is fully participating, with stations covering all waters from Washington to Alaska.

WAAS stands for Wide Angle Augmentation System and is being developed by Raytheon for the FAA to provide in-flight navigation corrections for aircraft including satellite failure alerts. Despite the program still being in the test phase, there have been a lot of new products with the WAAS capability. One reason is that it is very inexpensive to add WAAS to GPS receivers. The information is broadcast like a GPS signal by two geostationary satellites – one over the East Coast and one over the West. The plan is to have monitoring stations at the airports and your GPS will use the correction factor sent in by the closest station. Presently, the only station on the West Coast is Seattle. Thus, the correction becomes less useful the further away from Seattle you go. Canada has no plans to participate in this program.

We at **Lunde Marine Electronics, Inc.** are your full service electronics dealer. We carry all the major brands including everything from Radar to GPS from VHF to SSB and everything in between. Call me with your questions.

*Fred Fink, Sales Manager*

**LUNDE MARINE ELECTRONICS, INC.**

5415 – 24<sup>th</sup> Avenue N.W.  
Seattle, WA 98107  
206-789-3011



**Boating Club**

C/o Doug Filer, Treasurer  
4201 Roosevelt Way NE  
Seattle, WA 98105  
February 2003 Newsletter

**Inside this Newsletter**

Fun, Food, Activities,  
Commodore's and  
Vice Commodore's Report.

Important information about  
entering Roche Harbor,  
Rear Commodore's  
Report—READ!

Spring Mini-cruise to  
Gig Harbor-sign up ASAP.

Tolly's 92nd Birthday

New-Tolly Music

Duck Races



**New Membership  
Application**

**Date** \_\_\_\_\_  
**Name** \_\_\_\_\_ **Spouse's Name** \_\_\_\_\_  
**Address** \_\_\_\_\_  
**City** \_\_\_\_\_ **State** \_\_\_\_\_ **Zip** \_\_\_\_\_  
**Phone#** \_\_\_\_\_ **E-Mail Address** \_\_\_\_\_  
**Moorage Location** \_\_\_\_\_  
**Yacht Club Affiliation** \_\_\_\_\_  
**Vessel Name** \_\_\_\_\_ **Model** \_\_\_\_\_  
**Hull Number (TYL)** \_\_\_\_\_ **Length** \_\_\_\_\_ **Year** \_\_\_\_\_

• \$45 First Year Membership - Includes roster, newsletter, name tags & Tollycraft Burgee.  
• \$30 Renewal - Includes roster and newsletter.

• Send Application with payment to:

• Tollycraft Boating Club  
• Doug Filer, Treasurer  
• 4201 Roosevelt Way NE  
• Seattle, WA 98105

**DO NOT WRITE IN THIS SPACE**

Date Rcvd. \_\_\_\_\_  
Amt. \_\_\_\_\_  
Dues Pd. To: \_\_\_\_\_  
Rcvd. By: \_\_\_\_\_  
Comments \_\_\_\_\_

**2002/2003 Tollycraft  
Boating Club Officers**

- Dan Eastlick (253) 857-3469  
• Commodore
- Lee Worthy (425) 373-1823  
• Vice Commodore
- Rheta L. Pearson (206) 575-1395  
• Rear Commodore
- Ken R. Pearson, P/C (206) 575-1395  
• Secretary
- Doug Filer, P/C (206) 545-4800  
• Treasurer
- Don Ballew (425) 746-2301  
• Immediate P/C
- **Trustees:**
- Thom Permenter (425) 478-3994
- Kaye Ballew (425) 746-2301

**Newsletter Staff:**

- Ken R. Pearson, P/C Publisher/  
• Editor
- Doug Filer, P/C Printer  
• Sue Worthy Assembler